

SYSTEM
NORMAL

SYSTEM
ACTIVATED

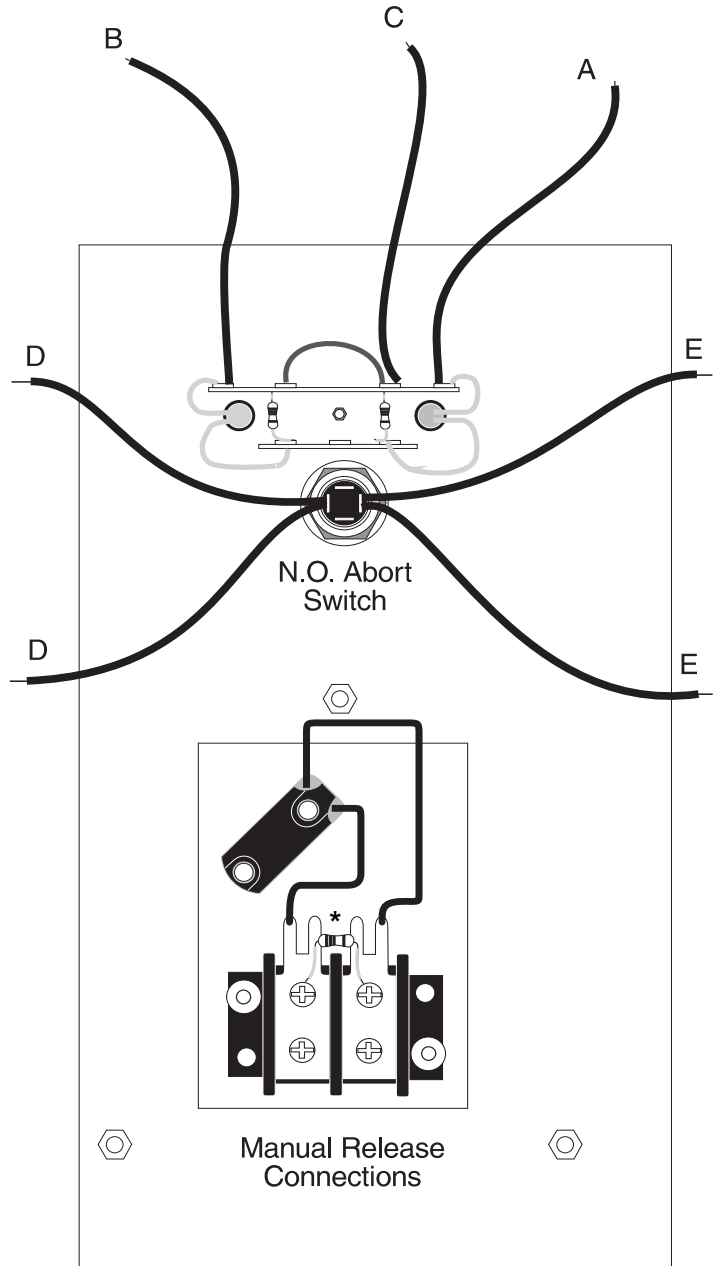
TO ABORT - HOLD IN



For use with the FireLite Sensiscan 1000, Miniscan 424A, Miniscan 124R, Sensiscan 2000 and MRP-4424 fire alarm control panels.

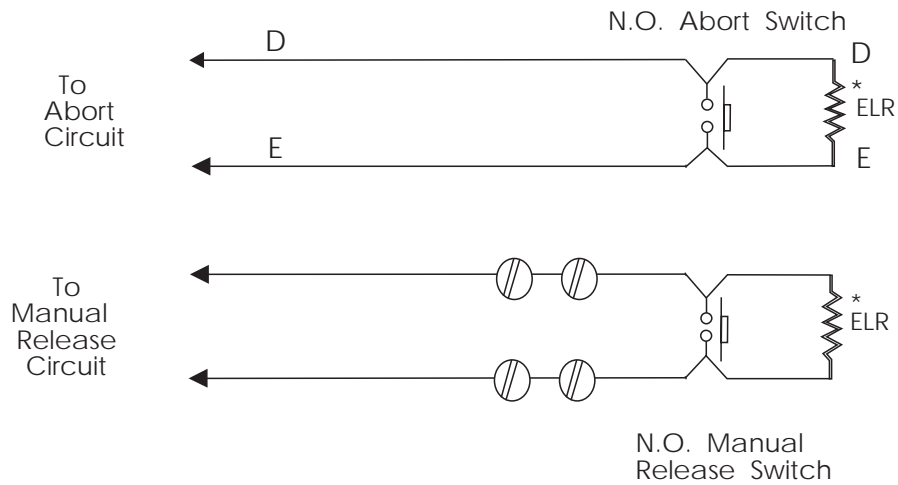
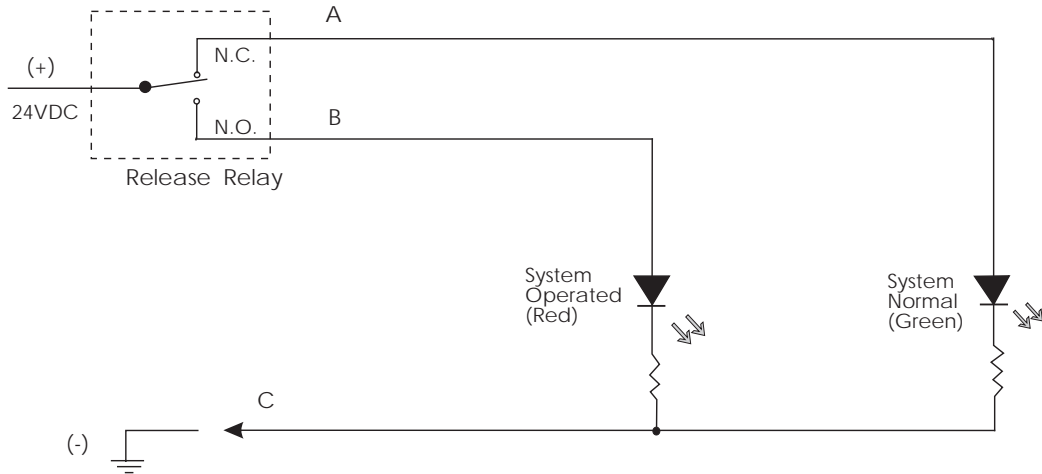
ARA-10 Agent Release Pull Station

Product Installation Drawing
Doc# 15451, Rev A
3/31/93 ECN 92-169



* ELR (across last unit only)





* NOTE: Mount ELR on the last unit.

For Last Unit:

Sensiscan 1000, Miniscan 124R and Miniscan 424A - Mount 10K resistor on the last unit. Refer to the following documents when connecting to the control panel: S-1000, Doc#15374; MS-124R, Doc# 15742; MS-424A, Doc# 15445.

Sensiscan 2000 and MRP-4424 - Mount 4.7K resistor on the last unit. Refer to the following documents when connecting to the control panel: S-2000/TC-2F, Doc# 15017/15971; MRP-4424, Doc#15180.